

Money Box Catalog



THE **EVOLUTION** OF PAYMENT
Quality, Security, Dependability



Type:

Part #'s/Application:

Tray Specifications:

UG400



8-1150-X-X	Height: 2.375"
8-1280-X-X with security plate	Width: 3.515"
Tray #: 8-2128	Length: 4.0"
Old SQ, GE, Sears, Huebsch, IDC	Weight: 1.75 lb.
	Capacity: \$45.00

UG400A



8-1210-X-X	Height: 2.375"
8-1184-X-X with security plate	Width: 3.515"
Tray #: 8-2170	Length: 5.5"
Wascomat, GE, SQ, Huebsch, Whirlpool	Weight: 1.75 lb.
	Capacity: \$70.00

UG400B



8-1240-X-X	Height: 2.375"
8-1186-X-X with security plate for top loaders only	Width: 3.515"
Tray #: 8-2235	Length: 7.84"
Dexter WCH19, WCL25, WCK6	Weight: 2.10 lb.
DL2X30Q, SQ EX, EX325, EX440, Huebsch, 32DG, Unimac front loaders	Capacity: \$120.00

UG400LG



8-1288-X-X	Height: 2.375"
Tray #: 8-2235	Width: 3.5"
LG stack machine	Length: 11.1"
	Weight: 2.4 lb.
	Capacity: \$155.00

UG800



8-1170-X-X	Height: 3.175"
Tray #: 8-2138	Width: 3.515"
Large capacity Whirlpool with meter case plate removed.	Length: 5.875"
	Weight: 2.25 lb.
	Capacity: \$130.00

UG800A



8-1175-X-X	Height: 3.175"
Tray #: 8-2138-1	Width: 3.515"
Sears/Kenmore (post 1975)	Length: 4.0"
	Weight: 2.0 lb.
	Capacity: \$70.00

Type:

Part #'s/Application:

Tray Specifications:

UG800B



8-1275-X-X
Tray #: 8-2138-2
Maytag top load washer & dryer
(post 1996), Electrolux, Maytag

Height: 3.175"
Width: 3.515"
Length: 7.25"
Weight: 2.4 lb.
Capacity: \$150.00

HS800B



8-1314-X-X without security plate
8-1316-X-X with security plate only
available with Medeco key.
Tray #: 8-2138-2
Maytag top load washer & dryer
(post 1996), Electrolux, Maytag

Height: 3.175"
Width: 3.515"
Length: 7.25"
Weight: 2.4 lb.
Capacity: \$150.00

UG800C



8-1286-X-X
Tray #: 8-2138-3
Huebsch & Dexter 60lb. and up,
SQ front loaders, WCRD2050,
WCRDMCD330, GE

Height: 3.175"
Width: 3.5"
Length: 8.0"
Weight: 2.38 lb.
Capacity: \$190.00

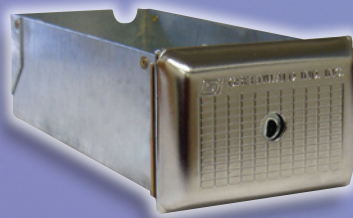
MG3000



8-1260-X-X
Tray #: 8-2237
Wascomat, GE, GQ, Huebsch, WP

Height: 2.4"
Width: 3.515"
Length: 5.5"
Weight: 1.75 lb.
Capacity: \$70.00

MG3000B



8-1270-X-X
Tray #: 8-2242
Dexter WCH19, WCL25,WCK6,
DLC30Q, DLR30Q, DL2X30Q,
SQ EX218, EX325, EX440, Huebsch,
32DG, Unimac front loaders

Height: 2.4"
Width: 3.515"
Length: 7.98"
Weight: 2.0 lb.
Capacity: \$120.00

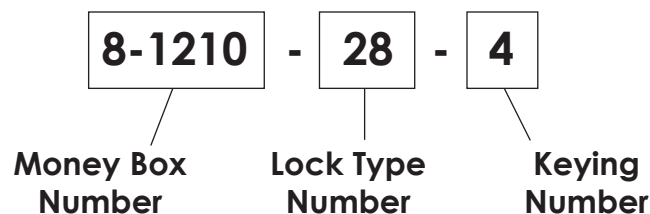
Money Box Keying

Lock Type						
	Low Security	Medium Security		High Security		
	Tubular	Sentinel II	Duo	Cobra	Abloy	Medeco
Regular	0	42	9	28	25	10
Blue is Flat only	400	442	409	428	425	410
Black	500	542	509	528	525	510

Popular Lock Keying			
Locks Coded	Grouping of	# of Keys Per Lock	P/N Code
Assorted	Each Lock Coded Differently	1	4
Assorted	Each Lock Coded Differently	2	5
Alike	20 to Same Code	1	10
Alike	100 to Same Code	1	7
Alike	Quantities of Your Choice	1	6
Alike	To Code of Your Choice, Quantity of Your Choice	1	19
Alike	Groups of 60	1	14
Alike	Quantities of Choice, 2 Keys	2	2

Money Box Ordering System

Example of Ultra-Guard 400A high security money box, cobra lock, 1 key per lock, keys assorted.



Contact your Greenwald distributor or sales representative for more details!

GREENWALD INDUSTRIES

212 Middlesex Avenue | Chester, CT 06412 USA | Tel: (860) 526-0800 | Fax: (860) 526-4205

Toll-Free Tel: 1-800-221-0982 | Toll-Free Fax: 1-800-445-1340

www.greenwaldindustries.com

United States & Canada Customer Service & Technical Assistance:

Monday–Friday, 8am to 5pm EST.

Contents, specifications and availability are subject to revisions serving the technical improvement.
Not responsible for any typographical errors.

