

primus.

GET AHEAD IN LAUNDRY



MB90 | MB110 | MB140 | MB180 BARRIER WASHER-EXTRACTORS



TOUCH CONTROL AVAILABLE
Multilingual user-friendly 7" touch control



HIGH CAPACITY WATER INLETS
For shorter wash cycles



CLOUD-BASED PLATFORM
to easily monitor your laundry everywhere and at any time



AUTOMATIC WEIGHING SYSTEMS
Automatically adapts amount of water and detergent based on the wash load



IMPROVED DURABILITY
for your peace of mind with a 3-year warranty

FEATURES & BENEFITS

Features

- Freestanding, high spin
- Stainless steel cabinet, drum and tub
- Easy access to all vital parts
- Large door opening for easy loading & unloading
- Large drain valve (Ø 126 mm)
- Perforated lifting ribs: more mechanical action, lower water consumption
- Standard Y-pocket (3 pockets) drum on MB1100, MB1400, MB1800
- Pullman drum (2 pockets) on MB90
- Soap dispenser with 5 removable compartments (10 on MB1800)
- Automatic door positioning

Options

- Liquid soap connection and pumps
- Liquid soap pumps
- Drum with 2 pockets on MB1100, with 3 pockets on MB90
- Water sample tap
- Light and sound signalisation of end of washer cycle
- Second display
- Insulation for energy, heat and noise reduction

Control

- XControl FLEX PLUS – fully programmable and customizable cycles 7" touch screen.
 - User-friendly screen with operating instructions built in as part of the control
 - Complete control content available in 34 languages
- Graphitronic – multilingual freely programmable graphic display.

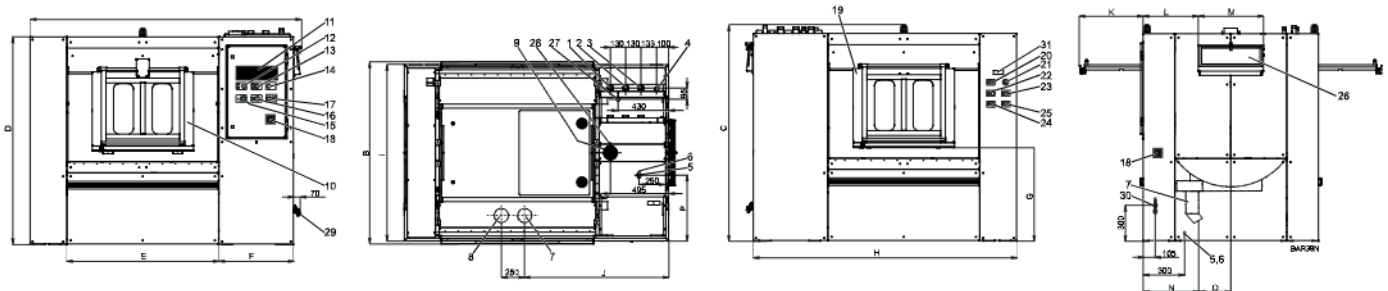
SPECIFICATIONS

TYPE		MB90	MB110	MB140	MB180
INNERDRUM					
Capacity 1:09	kg (lb)	100 (220)	122 (270)	155.5 (243)	200 (441)
Capacity 1:10	kg (lb)	90 (198)	110 (242)	140 (309)	180 (397)
Volume	litres	900	1100	1400	1800
Diameter	mm	1000	1100	1200	1300
POCKETS					
		Standard 2	Standard 3	Standard 3	Standard
		Optional 3	Optional 2	Optional 2	-
DRUM SPEED					
Wash	rpm	36	35	33	36
Extraction	rpm	800	754	720	695
G-FACTOR					
		360	350	350	350
HEATING					
Electricity	kW	54	72	72	-
Steam	bar	6-8	6-8	6-8	6-8
Hot water	°C	90	90	90	90
Sound pressure level	dB (A)	< 77	< 84	< 80	< 81
Water valves connection	BSP	3 x 1.5" / 1 x 3/4" 4 x 1.5" / 1 x 3/4"	3 x 1.5" / 1 x 3/4" 4 x 1.5" / 1 x 3/4"	3 x 1.5" / 1 x 3/4" 4 x 1.5" / 1 x 3/4"	3 x 1.5" / 1 x 1" 4 x 1.5" / 1 x 1"
Water pressure	kPa	100-800	100-800	100-800	100-800
Rec. water pressure	kPa	300-600	300-600	300-600	300-600
Drain valve	outer Ø mm	126	126	126	126
Flow amount with drain valve	l/min	600	600	600	600
Steam valve connection	BSP	1"	1"	1"	1"
Steam pressure	kPa	600-800	600-800	600-800	600-800
DIMENSIONS					
Size H×W×D	mm	1830x2275x1605	1880x2325x1605	2100x2425x1805	2195x2585x1905
Net weight	kg	2810	2990	3550	4990
TRANSPORT DATA					
Packed H×W×D	mm	1985x2355x1740	2080x2400x1740	2250x2485x1940	2265x2665x2040
Gross weight	kg	2970	3150	3760	5310

DIMENSIONS

	A	B	C	D	E	F	G	H	I	J	K	L	M	N	O	P
MB90	2275	1605	1830	1725	1250	636	750	2200	1500	1160	550	470	560	400	350	500
MB110	2325	1605	1880	1775	1300	636	800	2250	1500	1190	550	470	560	400	350	500
MB140	2425	1805	2100	1995	1382	636	900	2350	1700	1200	620	570	560	400	500	600
MB180	2585	1905	2195	2090	1498	636	900	2510	1800	1255	650	408	1175	400	500	600

width depth height



- | | | | |
|-----------------------------|--|-------------------------------------|---|
| 1. Hard cold water inlet | 9. Venting of the machine | 16. Button of drum positioning | side |
| 2. Soft cold water inlet | 10. Door of loading (dirty side) | 17. Button of door locking | 24. Button of door unlocking |
| 3. Hot water inlet | 11. Programmer | 18. Main switch | 25. Button of drum positioning |
| 4. Steam inlet | 12. Change-over switch | 19. Door of unloading (clean size) | 26. Soap hoppers |
| 5. Supply of pressure air | 13. Signal of machine running (+ operating air pressure) | 20. Signal of loading | 27. Soft cold water inlet into soap hoppers |
| 6. Power supply | 14. Centralstop | 21. Centralstop | 28. Liquid detergent inlet |
| 7. Main drainage valve | 15. Button of door unlocking | 22. Button of door locking | |
| 8. Recycling drainage valve | | 23. Button of activation of loading | |