

# MULTI-LOAD STACK DRYERS

## ENERGY ADVANTAGE LINE – VEND: MLG35 AND MLG52



### MICROPROCESSOR CONTROLS

- Easy-to-read diagnostics assist with quick identification of an issue helping to get the machine back into service
- Owners can control time-of-day pricing and additional costs for end-user upgrades
- End users have option to select ideal cycle for individual drying needs
- Easy-to-read Time Remaining Digital Display informs users of cycle times to help reduce bottlenecks



### AXIAL AIRFLOW SYSTEM

- Consistent drying with low BTUs
- Helps manage utility costs while still providing effective drying for efficient machine turnover



### OWNER-PROGRAMMABLE SINGLE-PHASE REVERSING CYLINDER

- Helps separate fabrics to promote effective dry cycles helping to reduce tangling and wrinkles



### BUILT TO LAST

- Four Roller Suspension with Permanently Lubricated Bearings – provides consistent drying
- Heavy Duty Motor – designed to handle large loads with ease
- Extra-Large Door Opening with Dual-Pane Door Glass – provides unhindered access while loading and unloading, and dual-pane glass helps keep heat inside for optimal drying



**COIN EQUIPPED**  
MLG52PDBWS pictured  
(Also available in White)



**COIN EQUIPPED**  
MLG35PDCBWW pictured  
(Also available in Stainless)

MULTI-LOAD STACK DRYERS – ENERGY ADVANTAGE LINE		
CAPACITY	MODEL NUMBER	COLOR
35 lb	MLG35PDBWW	White
35 lb	MLG35PDBWS	Stainless
50 lb	MLG52PDBWW	White
50 lb	MLG52PDBWS	Stainless



See [maytagcommerciallaundry.com](http://maytagcommerciallaundry.com) for warranty details.

VISIT [MAYTAGCOMMERCIALLAUNDRY.COM](http://MAYTAGCOMMERCIALLAUNDRY.COM) FOR MORE INFORMATION.

# MULTI-LOAD STACK DRYERS

## ENERGY ADVANTAGE LINE – VEND: MLG35 AND MLG52

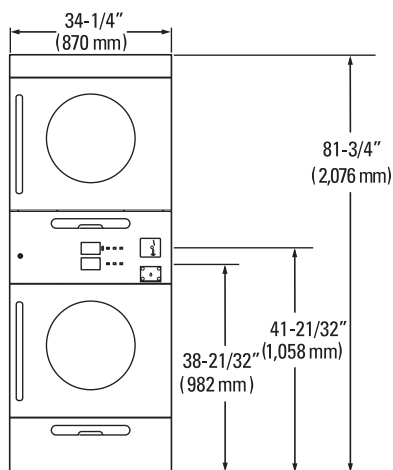


### GAS MULTI-LOAD STACK DRYERS

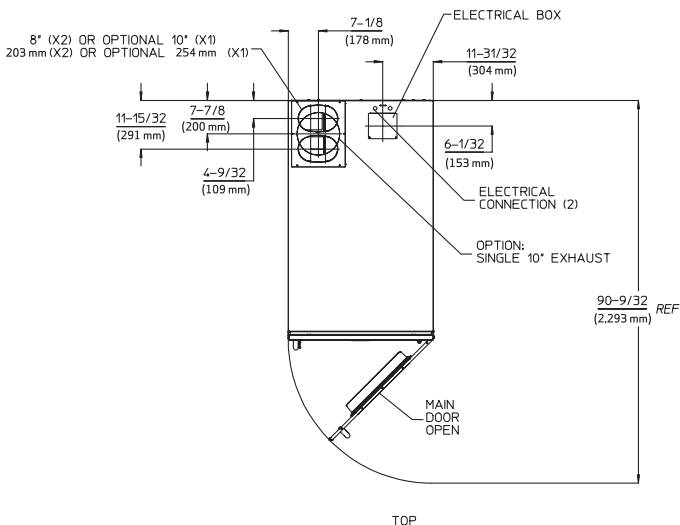
#### 120V/60 HZ/1 PHASE

#### MLG52

#### FRONT VIEW



#### TOP VIEW



Dimensions are for planning purposes only. See specific instructions for proper installation. Because of continuous product improvement, Maytag reserves the right to change specifications without notice.

MODELS	MLG35 (PD)	MLG52 (PD)
<b>CAPACITY</b>		
Number of Dryer Pockets	2	2
Cylinder Volume Each Pocket — cu. ft. (liters)	12.27 (347)	16 (453)
Cylinder Diameter Each Pocket — in. (mm)	30 (762)	35.72 (907)
Cylinder Depth Each Pocket — in. (mm)	30 (762)	32.75 (832)
Dry Load Capacity Each Pocket — lb (kg)	35 (15.8)	50 (22.68)
<b>GAS SPECS/AIRFLOW</b>		
Drive Motor Size — hp (kW)	1/4 (.19)	1/3 (.25)
Blower Motor Size — hp (kW)	1/2 (.37)	1/4 (.19)
Airflow Type	AXIAL	AXIAL
Airflow — cfm (cmm)	380 (10.76)	540 (15.2)
Gas Inlet Size — in. (mm)	.5 (12.70) M.N.P.T.	.5 (12.70) M.N.P.T.
Heat Input, Gas — btu/hr (kcal/hr)	64,000 (16,138) / Pocket	110,000 (27,720) / Pocket
Number of Exhausts	2	2
Exhaust Duct Diameter — in. (mm)	2 x 6 (152.4)	2 x 8 Standard (203.2)
<b>ELECTRICAL REQUIREMENTS</b>		
Breaker/Fuse — amps	15 / Pocket	15 / Pocket
<b>DIMENSIONS</b>		
Depth — in. (mm)	39.632 (1,006)	56.54 (1,436)
Width — in. (mm)	31.13 (791)	34.25 (870)
Height — in. (mm)	80.38 (2,042)	81.75 (2,076)
Door Opening — in. (mm)	19.38 (492)	23.75 (603)
<b>APPROXIMATE WEIGHT</b>		
Uncrated — lb (kg)	600 (272)	910 (413)
Crated — lb (kg)	630 (286)	960 (435)
<b>CONTROL/USER INTERFACE</b>		
Control Type	Microprocessor	Microprocessor
Display Type	Digital	Digital
Vended Controller	Yes	Yes
OPL Controller	No	No
<b>CONSTRUCTION</b>		
Cylinder	Galvanized Steel	Galvanized Steel
Top	Painted CRS	Painted CRS
Front	White/Stainless Steel	White/Stainless Steel
Side	Painted CRS	Painted CRS