



IY350 | IY450 | IY600

Softmount Washer-Extractor

FEATURES

- Stainless steel drum and tub
- Patented soap hopper
- Liquid soaps connection
- Easy access to all vital parts from the front
- Large door opening for easy loading & unloading
- 2x large drain valves (Ø 76 mm)
- Ergonomic height of door and control position for an easy operation
- Bumper (front side protection)
- Smart Drum : Extra mechanical action thanks to the cascading shape of the surface
- Smart Wave: Optimized water and detergent consumption

OPTIONS

- Liquid soap connection and pumps
- Water recovery kit
- Steam heating version
- 3rd water inlet
- Recycle drain valve
- Insulation for energy and heat & noise reduction
- Extra signalization (orange light + sound)
- Air operated water inlets
- Automatic weighing system through 4 weighing cells
- Tilting system: assists operators during loading & unloading

CONTROLS OPTIONS

- Evolis / Evolis Elite – fully programmable and customizable cycles 7" touch screen.
- User-friendly screen with operating instructions built in as part of the control
- Complete control content available in 34 languages
- Aries / Aries Elite – fully programmable control with 20 Pre-set programs and memory up to 99.



TOUCH CONTROL AVAILABLE

Multilingual user-friendly 7" touch control



CLOUD-BASED PLATFORM

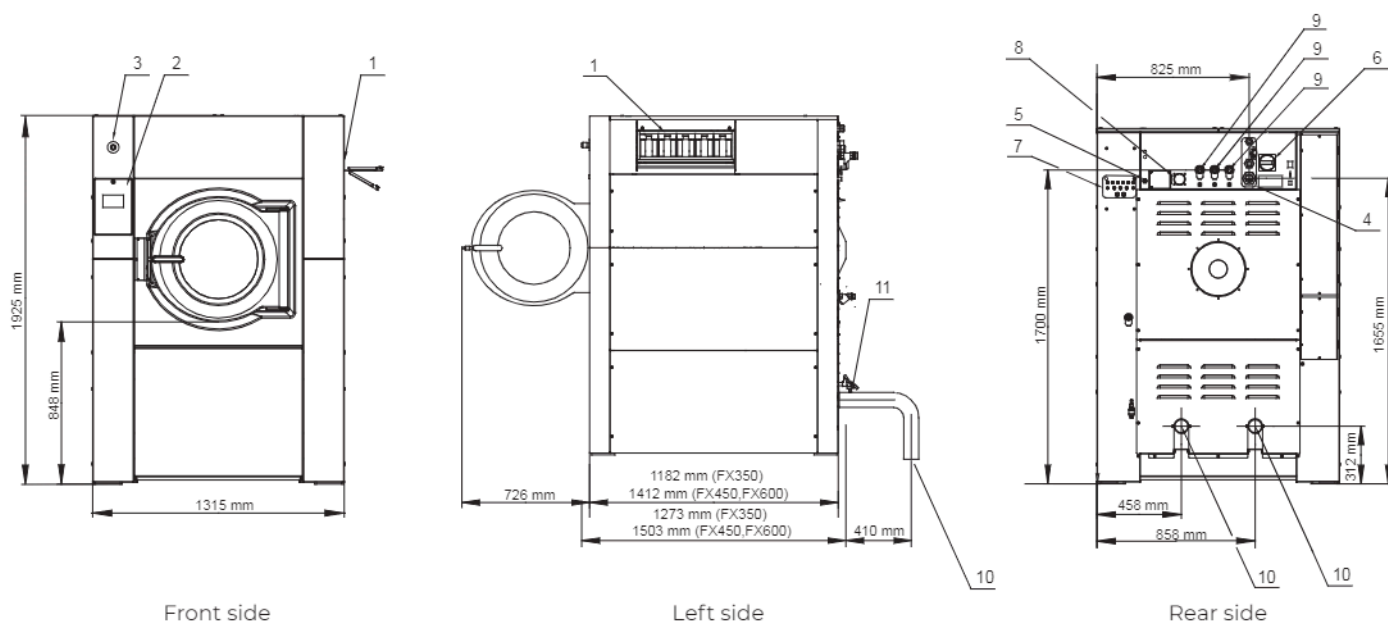
to easily monitor your laundry everywhere and at any time



AUTOMATIC WEIGHING SYSTEM

Automatically adapts amount of water and detergent based on the wash load

		IY350	IY450	IY600
INNERDRUM				
Capacity 1:09	kg (lb)	39 (86)	50 (110)	67 (148)
Capacity 1:10	kg (lb)	35 (77)	45 (99)	60 (132)
Volume	litres	351	452	601
Diameter	mm	914	914	1035
DRUM SPEED				
Wash	rpm	38	38	36
Extraction	rpm	839	839	788
G-FACTOR		360	360	360
HEATING				
Electricity	kW	24	36	54
Steam	bar	3-8	3-8	3-8
Hot water	°C	90	90	90
Sound pressure level	dB (A)	<75	<75	<75
Water valves connection	BSP	1"	1"	1"
Water pressure	kPa	100-800	100-800	100-800
Rec. water pressure	kPa	300-500	300-500	300-500
Water inlet	l/min	518	518	518
Drain valve	outer Ø mm	2x76	2x76	2x76
Flow amount with drain valve	l/min	2x 210	2x 210	2x 210
Steam valve connection	BSP	3/4"	3/4"	3/4"
Steam pressure	kPa	300-800	300-800	300-800
DIMENSIONS				
Size H*W*D	mm	1925x1315x1270	1925x1315x1502	1925x1315x1502
Net weight	kg	1010	1350	1500
TRANSPORT DATA				
Packed H*W*D	mm	2125x1425x1470	2125x1425x1700	2125x1425x1700
Gross weight	kg	1170	1490	1640



1. Soap hopper
2. Keyboard
3. Emergency stop
4. Electrical connection
5. Electrical connection to liquid soap
6. Main switch

7. Liquid soap pump connections
8. Air vent tub
9. Water connection
10. Drain valve
11. Water Sample Tap