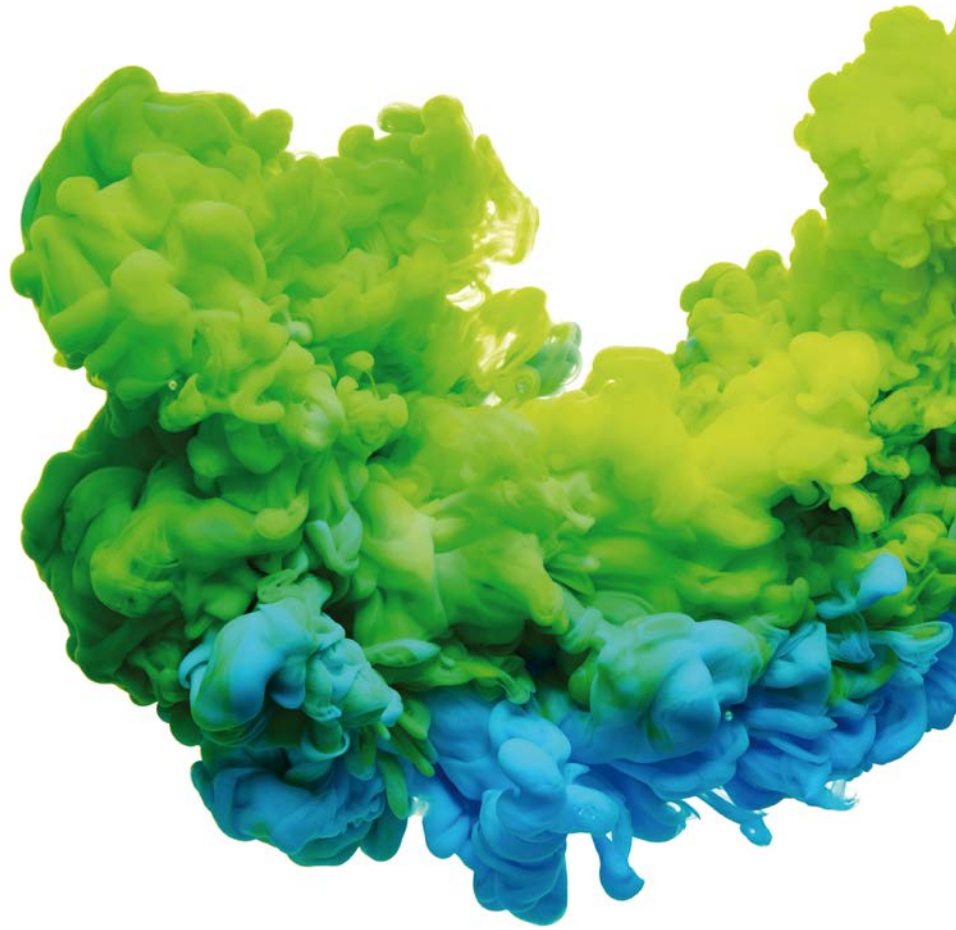




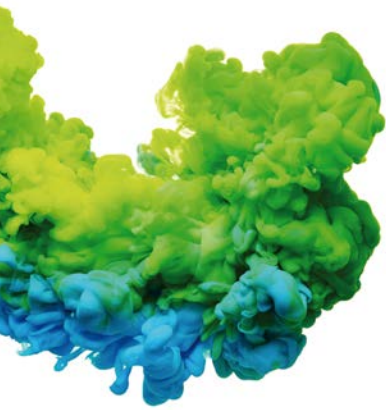
DOMUS
LAUNDRY USA
WINNING THE FUTURE THROUGH INNOVATION



Tumble dryers



ECOVOLUTION
by DOMUS



The state-of-the-art in drying

Domus meets the needs of every customer. Our range of dryers includes the most efficient features to reduce energy costs. The latest touchscreen control makes operation easier, attracts more customers, and increases the value of your laundry business.



TOUCH II is the most advanced control on the market. Its new technology and large 7" touch screen will increase user satisfaction and attract new customers.

TOUCH II

- ✔ User friendly and totally programmable microprocessor with a 7" **Touch II screen**
- ✔ **USB Connection.** PC software free of charge for programming, traceability, data analysis.
- ✔ You can program time of the day promotions and discounts automatically.
- ✔ **Videos shown on display:** ads, instructions (useful for coin laundry)
- ✔ **Optional:** **New dosing/vaporizing system** (softeners/perfumes)



M programmer

Programmable with the external console (optional) or easy display (optional).



TOUCH II evolves with **DOMUS Connect**: full remote control to ensure traceability, easy maintenance and business management features.

CONNECTIVITY

- ✔ **Remote Desk**
Machine monitoring and management for traceability and statistics.
Data recovery, maintenance, software update, etc.
- ✔ **Management for laundries: OPL and COIN**
Our DOMUS IoT solution allows you to manage your laundry business (i.e., create discount programs for customers, get statistics, and business monitoring).

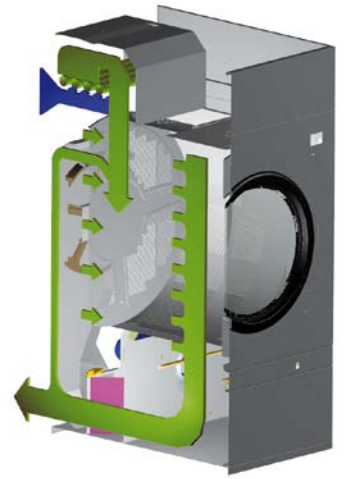




EFFICIENCY

- ✓ **Thermal insulation**
Insulated panels to avoid loss of heat
- ✓ **Air Re-Cycle**
Efficient air recovery system. Short drying times, less energy consumption.
- ✓ **Efficient Dry**
Intelligent humidity control.
- ✓ **Drum inlet temperature control**
A more accurate temperature control in the drum.
- ✓ **Full Flow**
New "optimized" system of mixed airflow.
- ✓ **Double Flow**
Axial radial airflow in DYNAMIC and HEAT PUMP.

DOMUS dryers provide the most efficient features to reduce energy consumption.



Temperature



Air flow



Cycle time



Machine design

100% Efficiency



VERSATILITY

- ✓ **Wet Cleaning**
Possibility to create different phases per program with its customized parameters
- ✓ **OPL <=> Coin laundry**
Standard OPL model, easily adjust to coin laundry
- ✓ **Make to order:** customization
New possibility to customize the machines from the factory with the available options
- ✓ **Optional:**
Stainless-steel front panel. Coin kit.



Coin / Token

All models are easily adjustable from OPL to COIN, simply by adding a coin kit.



Payment systems

Open System

Domus equipment is prepared to work with any external payment system.

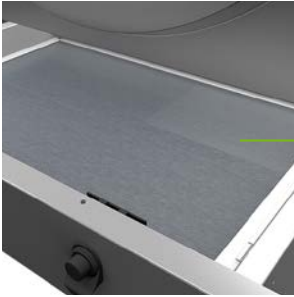
DOMUS dryers are specially designed to work with coin laundry businesses.





OUTSTANDING FEATURES

The most advanced technology in many standard features



Sleek design
Outer panels in elegant Skin Plate finish.

Stainless steel drum
as standard except ESSENTIAL range

Reversing drum action
as standard

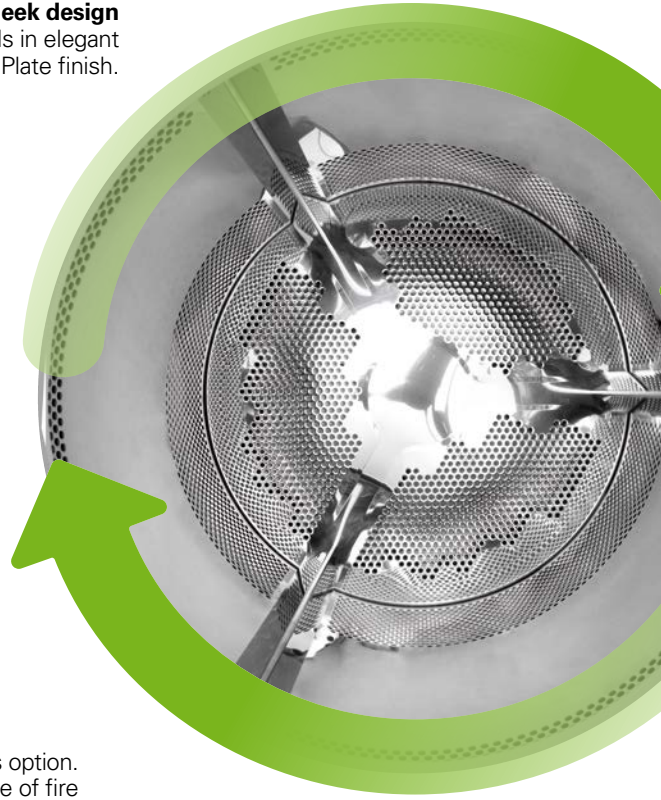
Frequency inverter
as standard

Intelligent moisture control
Energy savings, reduced drying time

Big lint filter
made of stainless steel

SFEX fire suppression as option.
Maximum safety in case of fire

Large loading door
Elegant & ergonomic



MAINTENANCE



DOMUS dryers require less maintenance and repair costs because they are made with high-quality components and parts, making your business easier.

Easy access to parts
Dryers are designed to offer an easy maintenance and reparability

Hinged panel
Easy and ergonomic access to control panel parts

Technical menu
Machine monitoring, machine error warning, management for traceability and statistics.
Remote desk and data recovery for technicians and maintenance, software update, etc.

Equivalent parts
Most key parts are the same for all models

DOMUS Product Range



UDTT

ECOENERGY | The most efficient

- ✓ AIR RE-CYCLE: air recovery system for great energy efficiency.
- ✓ EFFICIENT DRY: the intelligent humidity sensor.
- ✓ THERMAL INSULATION: the complete circuit of the air-flow.
- ✓ FULL FLOW: optimized axial-radial air flow.
- ✓ SFEX: Integrated Fire Extinguishing System.
- ✓ Microprocessor TOUCH II: 7" full color touch screen.
- ✓ Grey skinplate body, stainless steel look.
- ✓ Big loading door (opening of 180°).
- ✓ REVERSE ACTION: standard in all models.
- ✓ STAINLESS STEEL DRUM standard.
- ✓ SOFT DRY: extra smooth drum perforations.
- ✓ FULL SCREEN FILTER: new filter drawer with wide surface and improved airflow.
- ✓ COOL DOWN: anti-wrinkle at the end of cycle.
- ✓ Models available in electric, gas or steam heating.

UDTT DYNAMIC

- ✓ Microprocessor TOUCH II: 7" touchscreen for all models.
- ✓ Grey skinplate body, stainless steel look.
- ✓ Big loading door (opening of 180°).
- ✓ REVERSE ACTION: standard in all models.
- ✓ STAINLESS STEEL DRUM standard.
- ✓ DOUBLE FLOW: mixed axial-radial airflow.
- ✓ SOFT DRY: extra smooth drum perforations.
- ✓ FULL SCREEN FILTER: new filter drawer with wide surface and improved airflow.
- ✓ COOL DOWN: anti-wrinkle at the end of cycle.
- ✓ Models available in electric, gas or steam heating.

OPTIONS

- EFFICIENT DRY: the intelligent humidity sensor.
- SFEX: Integrated Fire Extinguishing System.
- Double door glass.



UDLM ESSENTIAL

- ✓ M programmer: push buttons to control temperature and time.
- ✓ White painted panels. Galvanized drum.
- ✓ Big loading door (opening of 180°).
- ✓ REVERSE ACTION: standard in all models.
- ✓ FULL SCREEN FILTER: new filter drawer with wide surface and improved airflow.
- ✓ COOL DOWN: anti-wrinkle at the end of cycle.
- ✓ Models available in electric or gas heating.

OPTION

- Display for M programmer.

Single pocket



DOMUS ECO-ENERGY | The most efficient

CONTROL TYPE	HEATING	CAPACITY								
		25 lb.	30 lb.	35 lb.	50 lb.	65 lb.	80 lb.	100 lb.	135 lb.	180 lb.
MICROPR. TOUCH II	Electric, gas, steam	UDTT-25 ECO-ENERGY	UDTT-30 ECO-ENERGY	UDTT-35 ECO-ENERGY	UDTT-50 ECO-ENERGY	UDTT-65 ECO-ENERGY	UDTT-80 ECO-ENERGY	UDTT-100 ECO-ENERGY	UDTT-135 ECO-ENERGY	UDTT-180 ECO-ENERGY



DOMUS DYNAMIC

CONTROL TYPE	HEATING	CAPACITY								
		25 lb.	30 lb.	35 lb.	50 lb.	65 lb.	80 lb.	100 lb.	135 lb.	180 lb.
MICROPR. TOUCH II	Electric, gas, steam	UDTT-25	UDTT-30	UDTT-35	UDTT-50	UDTT-65	UDTT-80	UDTT-100	UDTT-135	UDTT-180



DOMUS ESSENTIAL

CONTROL TYPE	HEATING	CAPACITY					
		25 lb.	30 lb.	35 lb.	50 lb.	65 lb.	80 lb.
ELECTRONIC CTRL M	Electric, gas	UDLM-25 ESSENTIAL	UDLM-30 ESSENTIAL	UDLM-35 ESSENTIAL	UDLM-50 ESSENTIAL	UDLM-65 ESSENTIAL	UDLM-80 ESSENTIAL

Double pocket: STACK



DOMUS DYNAMIC

CONTROL TYPE	HEATING	CAPACITY		
		2 x 25 lb.	2 x 35 lb.	2 x 50 lb.
MICROPR. TOUCH II	Electric, gas	UDTT2-25 STACK	UDTT2-35 STACK	UDTT2-50 STACK



DOMUS ESSENTIAL

CONTROL TYPE	HEATING	CAPACITY		
		2 x 25 lb	2 x 35 lb	2 x 50 lb
ELECTRONIC CTRL M	Electric, gas	UDLM2-25 STACK	UDLM2-35 STACK	UDLM2-50 STACK



Since 1922 DOMUS offers quality and service to its distributors and importers in more than 150 countries around the world.

WWW.DOMUSLAUNDRY.US



ONNERA GROUP



ONNERA USA, Inc.
13105 NW 47th Avenue, Opa Locka
Florida, 33054 USA
Ph. 305 477 1680

Headquartered in Miami, Florida, Domus provides comprehensive service and support to its network of distributors and customers in North America. Domus is part of ONNERA Group, an international group that markets its products over five continents. With 9 manufacturing plants distributed around the world, Onnera Group offers solutions adapted to each market.

